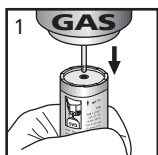
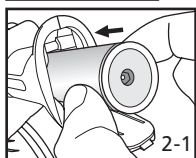


TG-600 Operating Instructions



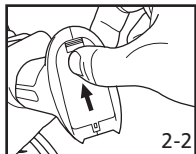
1. Fill LEC:

- Use standard Butane Fuel
- Invert Butane can to allow gravity assist.(Fig 1)
- Allow 5 minutes at room temperature for fuel to stabilize before use.



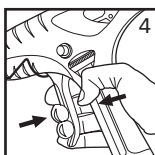
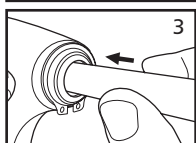
2. Insert LEC into Chamber:

- Insert LEC into TG600 chamber.(Fig. 2-1)
- Insert with green flat side toward inside of gun.
- Replace the chamber cap.(Fig. 2-2)



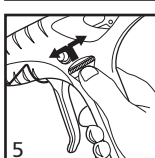
3. Insert Glue Stick:

- Place glue stick in rear chamber.(Fig. 3)
- Push forward until glue stick stops.
- If using short sticks or for continuous use, insert 2 sticks, one behind the other.
- Wait several minutes after inserting for glue to reach flow temperature.



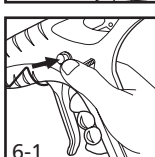
4.Advance Glue Stick:

- Pull lever back gently towards handle. (Fig. 4)



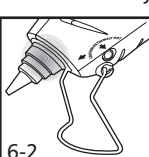
5. Adjust Fuel Control:

- Push up fuel control wheel until spring locks in place.(Fig. 5)
- Turn wheel to right.



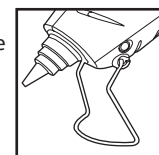
6. Ignite:

- Push red button until ignited(Fig. 6-1), indicated by a red glow.(Fig. 6-2)
- Allow 3-5 minutes to allow glue to soften.
- Turn wheel to lowest heat setting after 5 minutes.



7. Dispense Glue:

- Gently squeeze lever handle until desired amount of glue dispensed.



8. Rest in Stand:

- Pull down metal folding stand.
- Position gun in stand when not actively using.

9. Turn Off Unit:

- Turn off gun, when gluing is complete or unit will not to be used for more than 5 minutes.
- Rotate Fuel Control Wheel (Fig. 5) left until the end and it snaps into locked position.
- Avoid clogging/dripping after use by pulling back the glue about 1"

NOTE:

- Preferred use of TG-600 is at low setting, though experience and use will dictate optimal setting.
- When TG-600 is not in use for more than 5 minutes, TURN OFF UNIT. Prolonged run time without use will cause damage to the unit.
- After tool cools and is used at a later time, it is normal for up to 1" of hardened glue to be dispensed before hot glue flows from nozzle.
- Glue should flow smoothly without bubbles. If bubbles are present, the tool is set at too high a setting. Rotate fuel control wheel to lowest setting.



TECHNICAL SPECIFICATIONS:

Length	228mm (9.0 in)
Height	205mm (8.0 in)
Weight (when gas-filled)	385 g
Temperature	160~240C/320~464F
Gas container capacity	40 ml (LEC)
Operating capacity (one gas filling)	100 minutes



LEC-10
Refillable Type
Liquid
Energy
Cell™
(Gray cap color)



LEC-11
Disposable Type
Liquid
Energy
Cell™
(Yellow cap color)



Made in Taiwan